

EMPOWERING *brighter* FUTURES



C2T INC
CONNECTING2TOMORROW, INC

Annual
Review
2017



Organizational Information

Connecting2Tomorrow, Inc., a 501(c) (3) non-profit organization headquartered in Butler County, Pennsylvania, believes young people are one of our most valuable and untapped employment resources. Our organization recognizes that an increasing number of teens and young adults in Western Pennsylvania are living below the poverty level, or seeking government assistance for their basic life needs.

A 100% volunteer organization. Connecting2Tomorrow relies on community grants, donations, and fundraisers to fund its program for the young people in Butler County, Pennsylvania.

Connecting2Tomorrow's target audience is adolescents in the juvenile justice system, teens living in low-income households, and young people involved with children and youth services. However it is our belief that any young person would benefit from additional support and direction in their life.

C2T's Programs:

"A Better Me" for ages 12 to 14 – skills on respect, communication and goal setting

"Money Matters" for ages 15 to 18 – financial independence skills training

"Worked up" for ages 15 to 18 – employment skills training

"Foundations of Etiquette" for ages 12 to 18 – improving manners

"Study Skills Academy" for middle and high school students – improving academic success

"Youth Leadership Initiative" for ages 12 to 18 – events to help students improve skills with leadership, communication, interpersonal skills and team work

"Career Exploration and Motivational Mondays" for students at Butler Area Alternative Education Program

EXPECTED OUTCOMES

Projected Individual Participant Outcomes include:

- better school attendance,
- an improvement in grades, and
- an increased involvement in career opportunities.

Expected Community Outcomes include:

- an increase in high school graduation rates,
- a rise in students with positive, achievable career goals, and
- increased employment.



Connecting2Tomorrow addresses many life skills including:

- leadership,
- conflict resolution,
- motivation,
- skill building,
- work ethics, and
- the importance of giving back to the community.

Our programs utilize educational and open interactive discussions, group leadership projects, and individual life coaching sessions to teach essential career skills.

Connecting2Tomorrow's goal is to support and integrate these young people into employment positions and life-long careers within our communities.

Through mentoring, Connecting2Tomorrow plans to assist our participants to achieve the following:

- Improve school or work attendance
- Improve classroom performance
- Obtain a high school diploma or a General Education Development (GED) certificate
- Establish measurable and obtainable short and long range career goals
- Develop a plan with checkpoints and goals to obtain their goals and objectives
- Develop a resume and complete an employment application
- Describe the proper attire for an interview
- Participate in a "mock" interview
- Enter the labor force, learn a marketable skill or trade, or enroll in a post-secondary program
- List and describe acceptable work ethic practices including communicating with your employer and other co-workers and completing job assignments
- Create strategies to resolve conflicts and deal with barriers
- Develop a list of contacts and community resources available for future support
- Develop and demonstrate financial independence and responsibility

Who is



Connecting2Tomorrow is a volunteer-led 501 (c)3 non-profit organization based in Butler County.

We focus on providing teens and young adults the fundamental life and leadership skills that will change their outlook. Our goal is to enable them to be successful and responsible members of their community. With your assistance and actions, teens and young adults gain valuable skills and knowledge. They set goals, create plans to reach them, and begin to believe there is a chance for a brighter future. Volunteers also gain a better sense of understanding and awareness for the social and economic challenges facing today's youth. These barriers, often beyond their control, have led many young people to believe there is no chance to succeed.

As a volunteer-led organization we are always looking for eager new faces to help us grow! Come join us. **Together we can make a difference!**

Mission:

Assist teens and young adults to obtain the basic skills to become productive, responsible and successful members of society

Vision:

To empower teens and young adults through a mentoring program with interactive discussions to promote positivity and responsibility.

Connecting2Tomorrow, Inc . is Proud to Partner with:

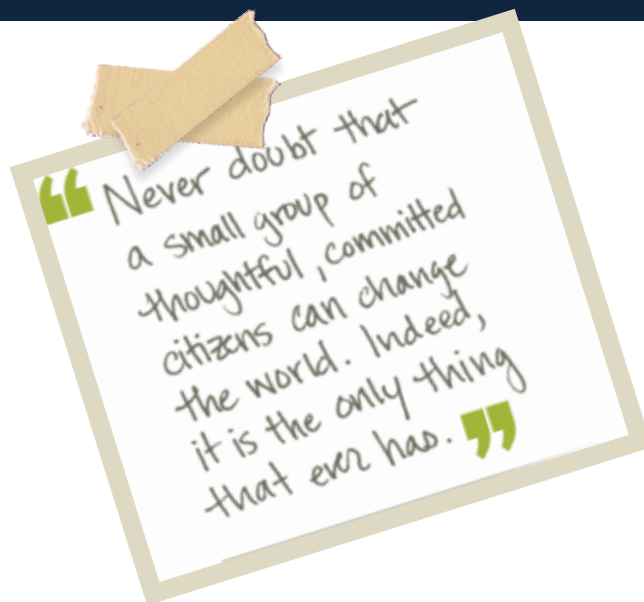


United Way of Butler County
Now part of United Way of Southwestern Pennsylvania



2017

Board of Directors



Pearl Walker
President



Carol Reed
Vice President



Christen Negich
Secretary



Anthon Stagno, Jr.
Treasurer

**Deanna Miller
Rick Zitalone
Judy Zarnick
Josh Taylor
Jerry Johnston
Steven Snow
Joshua Miller
Dawn Grochalski**

**Ryan Condello
Julie Wilczynski
Cara Cremonese**

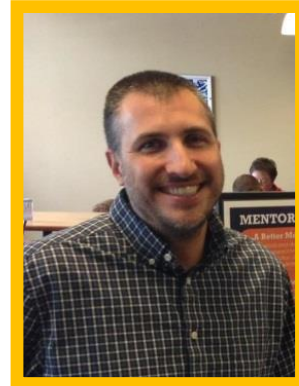
**Student Board Member:
Camron Lawton
Elijah Grochalski**

2017

Organizational Staff



Michael J. Liebler
Founder / Executive Director



Dave Piatek
Program Coordinator

Charine Hovenac
Clerical

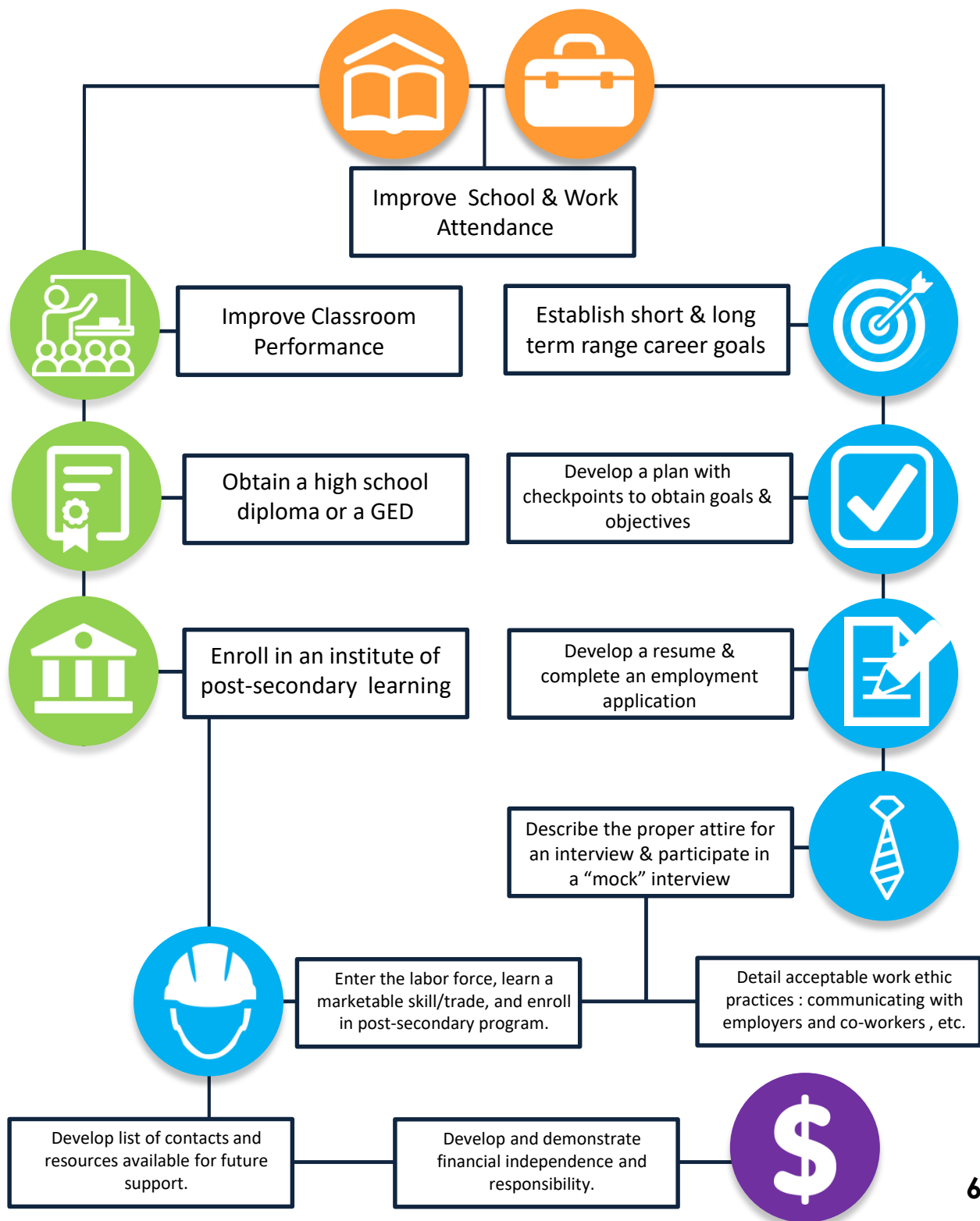
MENTORS:

Leslie Osche
Kevin Boozel
Steve Pelusi
Beth Bittner
Cynthia Harbison
Kathy Froiland
Mary Beth Rock
Sue Lozovoy
Danyle Verzinskie
Julie Anderson



2017

Measurable Accomplishments We Wish To Promote:



2017

Community IMPACT

210

Butler County students participated in C2T's program.

Better Me – 10
Career Exploration – 48
Foundations of Etiquette – 32
Future What? – 11
Money Matters – 2
Worked Up! – 7
Youth Leadership Initiative – 99
Study Skill Academy - 9

Demographics

Butler – 71%
Harrisville/Slipper Rock 8%
Chicora/Karns City 6%
West Sunbury 5%
Saxonburg 3%
Cranberry Township 3%
Slippery Rock 3%
Mars 1%
Other < 1%

Males – 47%
Females – 53%

Referral Types:
Other Organizations – 40%
School – 33%
Juvenile Justice 14%
Faith Based – 7%
Parent/Relative – 5%
Self – 1%

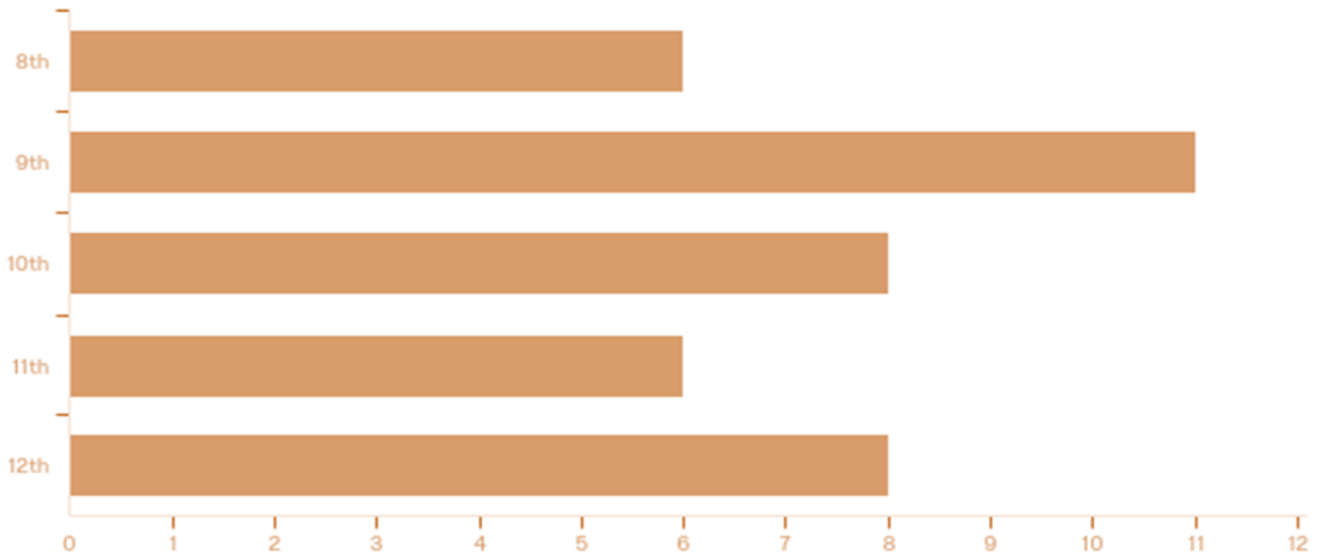
NEW:

- Created a Study Skills Academy
- Offering Motivational Mondays at Center Avenue Community School
- 32 Etiquette Kits Awarded
- 19 Worked Up Kits Awarded
- Began offering School Assembly Program
- Adagio Health joins the Youth Leadership Collaboration
- Toby Woodward Memorial Scholarship Awarded to 2 Butler County Students
- C2T partners with Innovative Mentoring for their mentoring software program
- Moved office into the Butler Cubs Hall – First Floor

2017

Planning & Evaluation

Needs Assessment and Post Survey Results:



Adult Relationship building

Before completing the program, 76% said that there are adults who they admire and want to be like. After completing the program, 95% of participants reported that they have a trusted adult in their life that they can talk to. 95% also reported feeling comfortable seeking information/advice from a trusted adult.

School success

Before completing the program, 80% of students agreed that they try hard in school. 50% of students reported that they like school and find it valuable to them. Despite this, students believed that getting good grades is important (100% agreed and 50% believe that studying hard for good grades is "very important") and only 10% believed that trying hard in school is a waste of their time.

2017

Planning & Evaluation

Career success

- **Before** completing the program, 60% of students believed that they had the skills needed to work in a place that they enjoy yet 100% knew that they could “succeed” at work and that working hard at a job would “pay off” in the end. 50% believe that it is “very important” to work hard to get ahead. 100% of participants reported that it is important to them to have a job that pays well.
- **After** completing the program, 91% report having the skills they need to work in a place they will enjoy. 88% report that they had helpful conversations discussing career goals and interests. 93% feel that they now know the steps necessary to work in a career that interests them.

Life Skills

- **Before** completing the program, students believed that it's important to save money for the future and to be careful what they spend. 100% of students agreed that it important to have a good reputation in the community. 90% believe that is it important that they do community or volunteer work.
- **After** completing the program, 93% report that they have been taught about the importance of saving money for the future and being careful what they spend. 91% report understanding the importance of having a good reputation in the community and the importance of community or volunteer work.

Peer Relationship Building

- Due to participating in the program, 88% of students reported that they have developed friendships and found people that they can rely on in the future.



SURVEY RESULTS

2017

2018 Goals

- C2T will improve the packaging and delivery of its programs to provide additional opportunities for students to participate in programs
- C2T's packaging and delivery model for 2018 and 2019 is redesigned and is intended to provide additional groups and resources to the more rural communities of Butler County
- We intend to increase participation in our programs by more intentionally partnering with our schools to offer programs in and after school
- C2T will continue to foster trusted adult relationships with students to assist them achieve success in planning for their future
- Continue to prepare students with the skills needed to prepare to enter the work force
- C2T will be partnering with the Cal Ripken Sr. Foundation and launch a new program in early 2019, called "Badges for Baseball – Quickball edition" to reach younger students ages 9 to 14 years old



2017

Grants and Gifts Received



THANK YOU!

- AK Steel
- Penguins Foundation
- United Way of Butler County
- Catholic City Churches
- Bantam Jeep
- Harmony Moose
- Butler Elks
- Sam's Club
- One by One
- Butler County Realtor's Association

Fundraisers

- Applebee's Dine & Donate
- Texas Roadhouse Dine & Donate
- Compadres Dine & Donate
- Butler BlueSox Tickets
- Murder Mystery Dinner
- Trivia Night
- Annual Appeals Campaign

2017

Financial Statement

Contributions	
Individual Gifts	\$5084.52
Corporate Gifts	\$175.00
Fundraisers	\$9647.06
Grants	\$18,822.70
Miscellaneous Income	\$1410.83
Net Assets released from restrictions	(\$5298.13)
TOTAL CONTRIBUTIONS	\$35,140.11
Expenses	
Insurance	\$1396.00
Operations	\$6252.73
Contract Services	\$1347.00
Program Services	\$11,417.77
Fundraising Expenses	\$4926.35
Facilities, Equipment and Rent	\$4000.00
TOTAL EXPENSES	\$29,335.85
Total Contributions	\$35,140.11
Total Expenses	\$29,339.85
Net Ordinary Income	\$5800.26